



Share in GDP*



25.0%
-1.5 P.P.
over to 2023

*Preliminary data

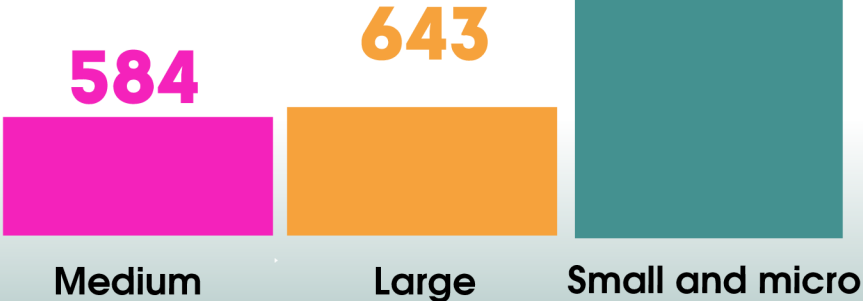
Share in total employment



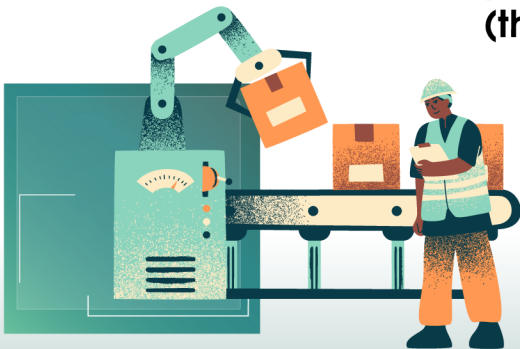
24.2%
+0.2 P.P.
over to 2023

Number of organisations

17 377
16 150



Number of employees**
(thousand persons)



899.6
+6.6 thousand persons
over to 2023

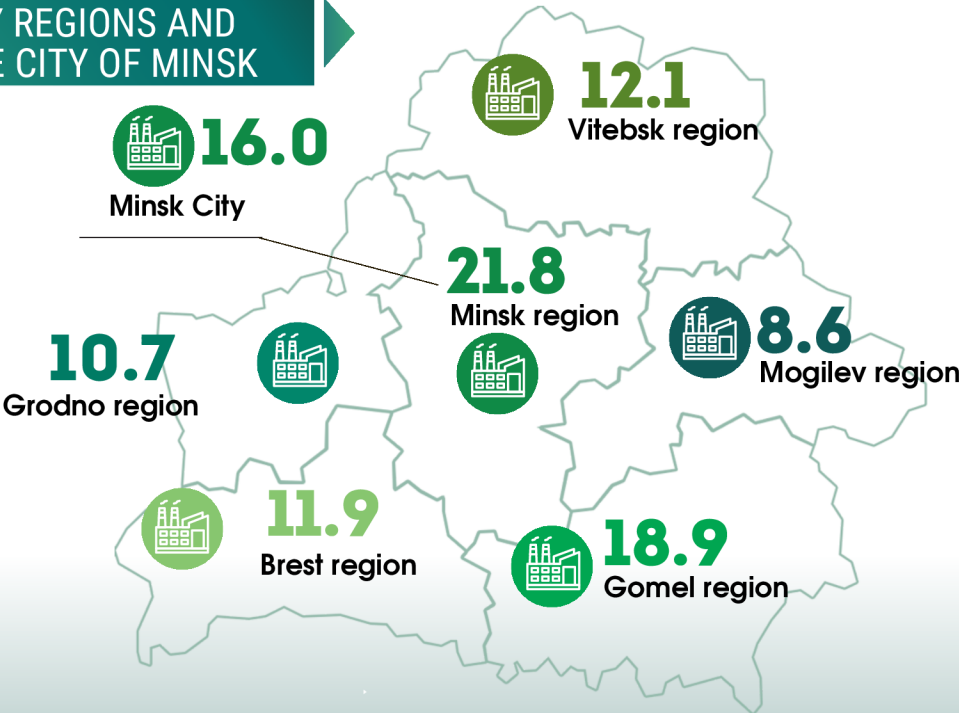
**Average annual staff headcount

Industrial Production Volume
(at current prices, BYN billion)

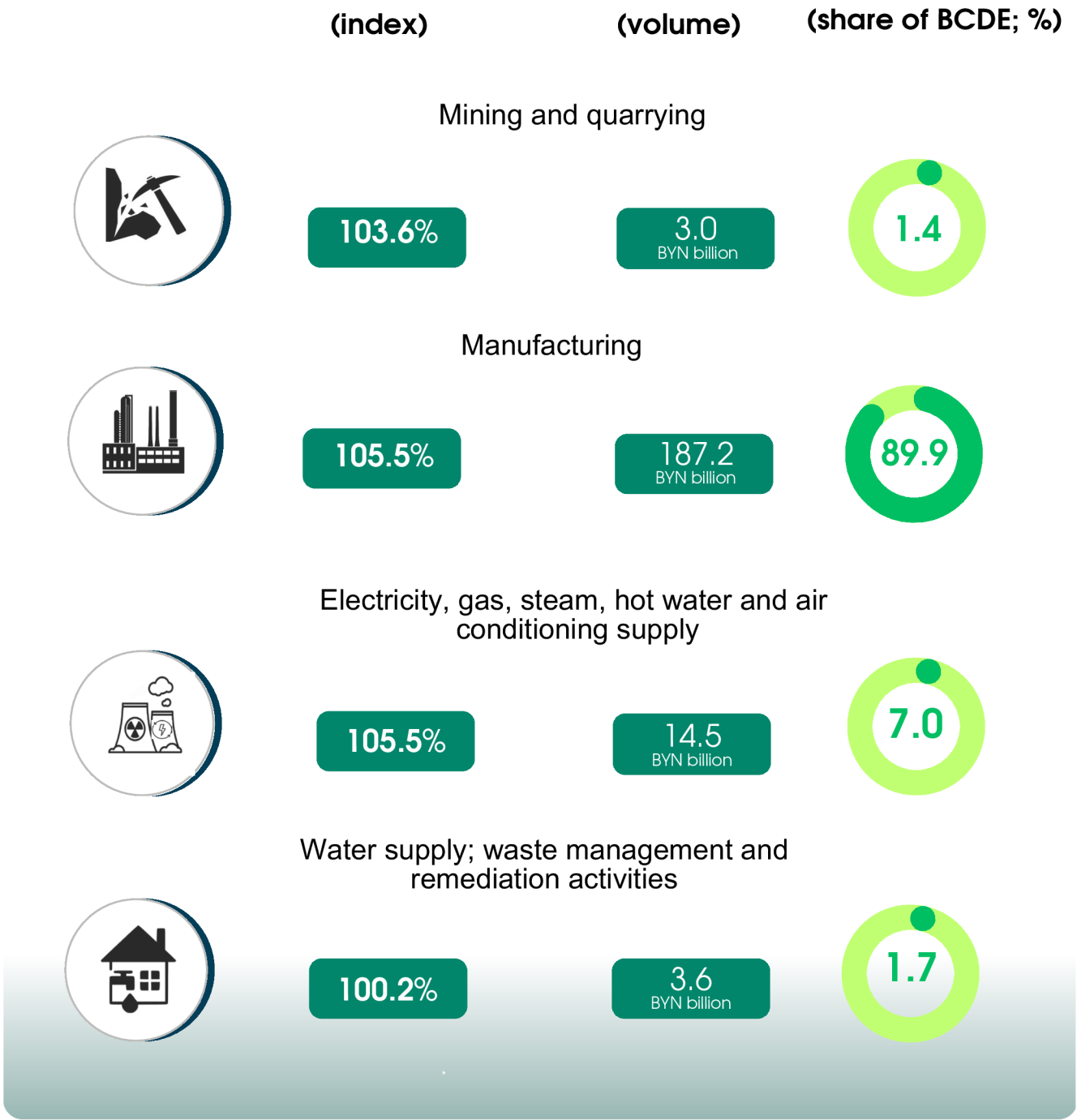
208.3

Share of the region of the Republic of Belarus
(percent of total)

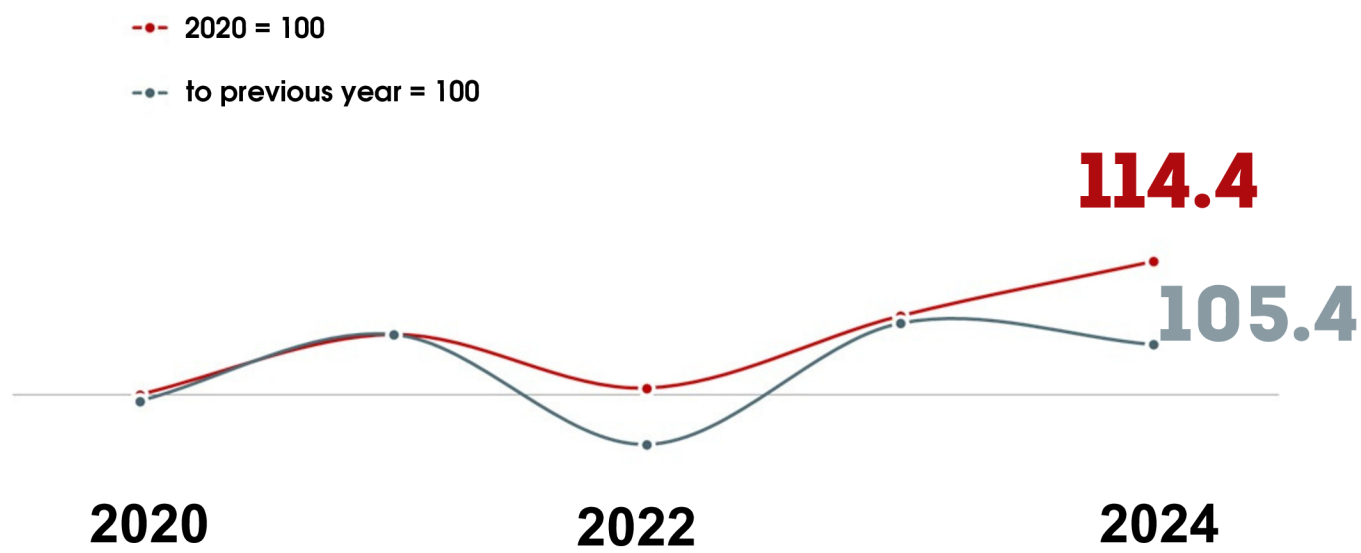
BY REGIONS AND
THE CITY OF MINSK



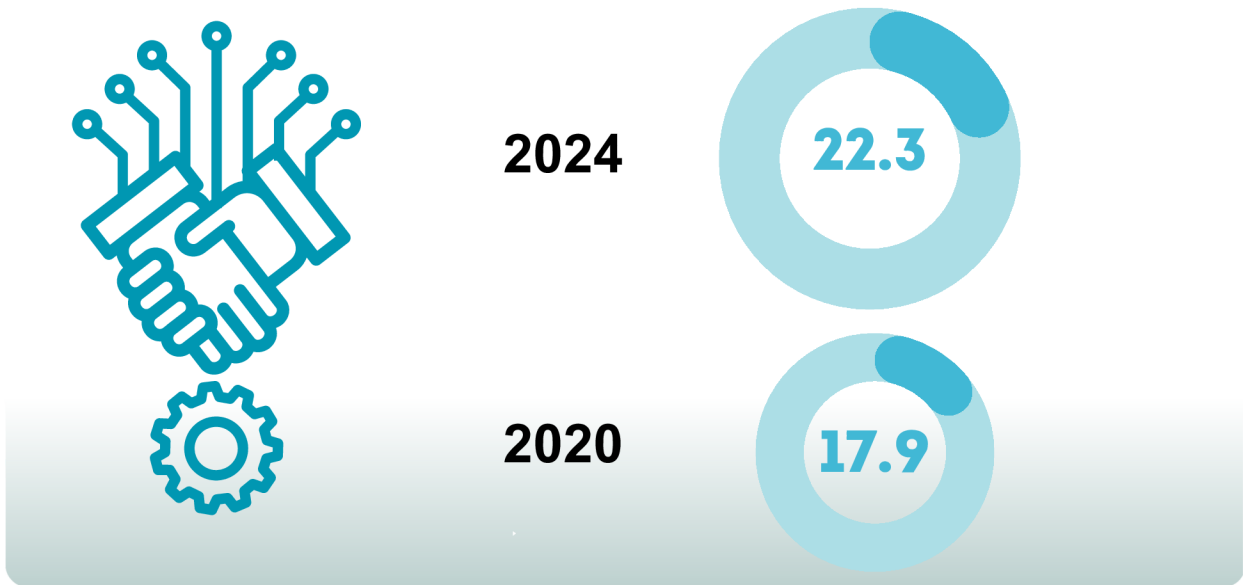
BY TYPES OF ACTIVITY



Index of Industrial Production
(at constant prices, %)



Share of shipped innovative products in total shipped products
(percent of total)



Actual information is posted



Provided for information purposes.
The data are preliminary and are subject to future revision.
The use of the information is authorised, provided the National Statistical Committee of the Republic of Belarus is acknowledged as the source.