

Total primary energy supply in Belarus in 2019

38

millions tonnes of coal equivalent



=

27

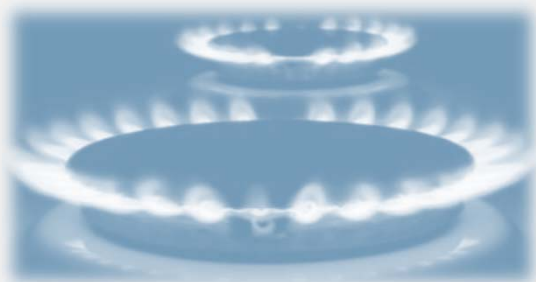
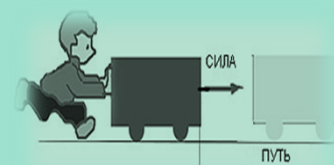
millions tonnes of oil equivalent



=

1,1

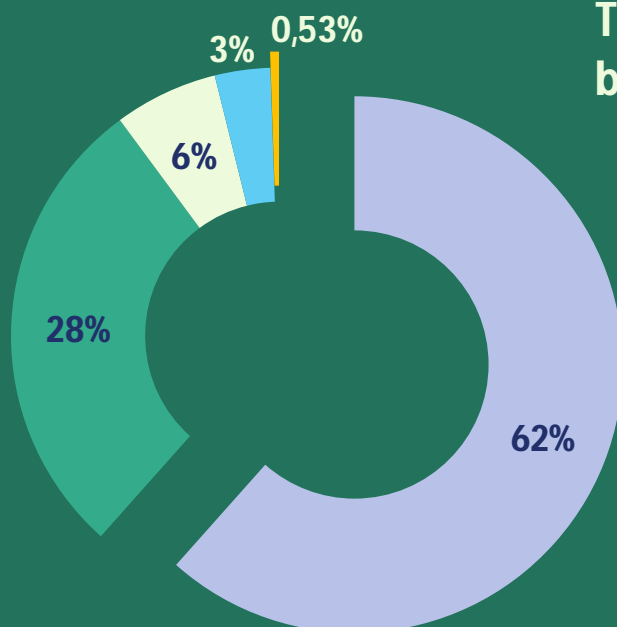
Exa-joules (10¹⁸ joules)



Natural gas is the main source of energy

62%

Total primary energy supply by fuel, 2019

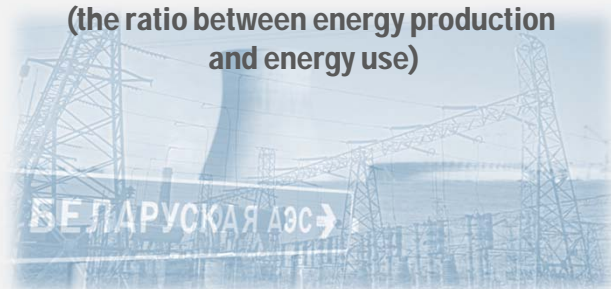


- Natural gas
- Oil
- Biofuels and waste
- Coal and peat
- Electricity

Belarus is one of the most energy dependent countries in the world

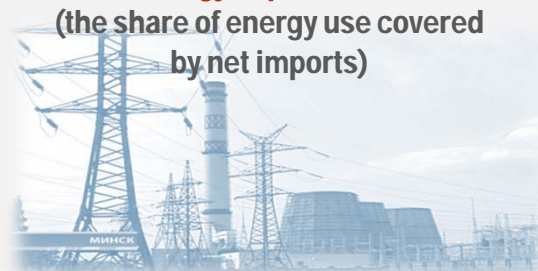
16,5%

Energy self-sufficiency
(the ratio between energy production and energy use)



84,8%

Energy dependence
(the share of energy use covered by net imports)



Highest self-sufficiency

109%

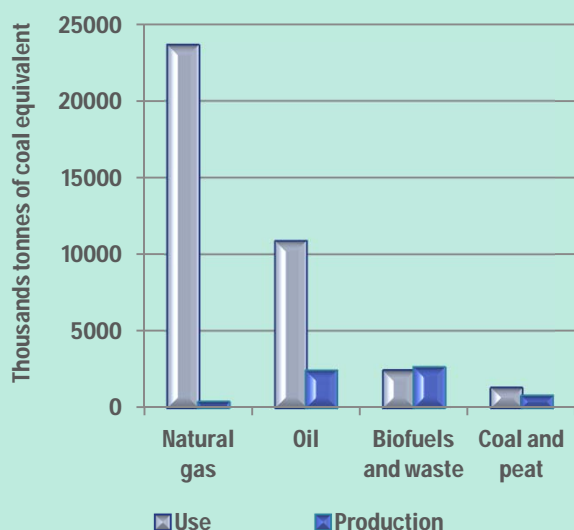
Biofuels and waste

Lowest self-sufficiency

2%

Natural gas

Production and use of energy in Belarus in 2019

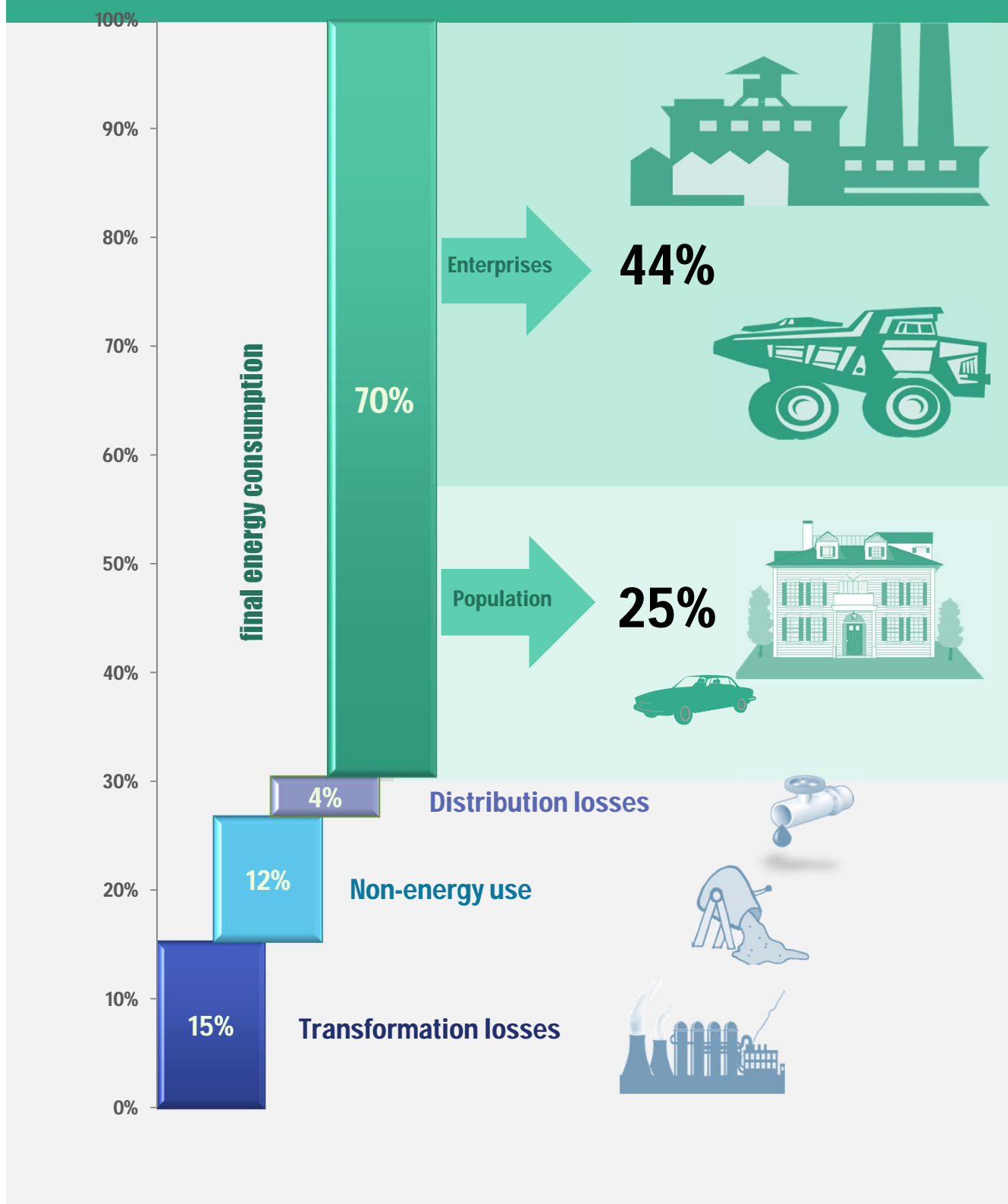


Primary energy production from renewable in total primary energy supply

7,1%



Structure of energy consumption in 2019



Transformation of fossil fuels into electricity and heat



losses



Fuel consumption for electricity and heat production

19

Mtce*

6

Mtce*

13

Mtce*

Production of:



Electricity

40

TWh

5

Mtce*



heat

59

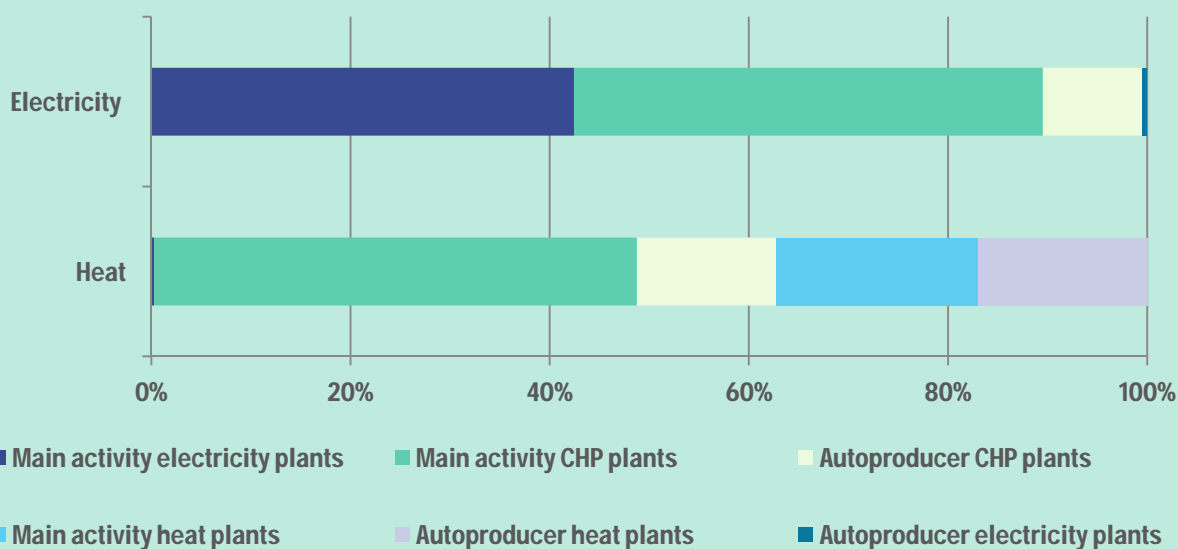
Pcal

8

Mtce*

production of electricity and heat

Production of electricity and heat by types of plants in 2019



*Mtce = millions tonnes of coal equivalent



Total final energy consumption by sector in 2019

