



STANDARDS OF LIVING OF POPULATION
(data of sample household living standards survey)

in Quarter I, 2026

LOW-INCOME POPULATION
(% of total population corresponding group)

REPUBLIC OF BELARUS

Proportion of the population with average per capita disposable resources below the minimum subsistence budget*

3.3%



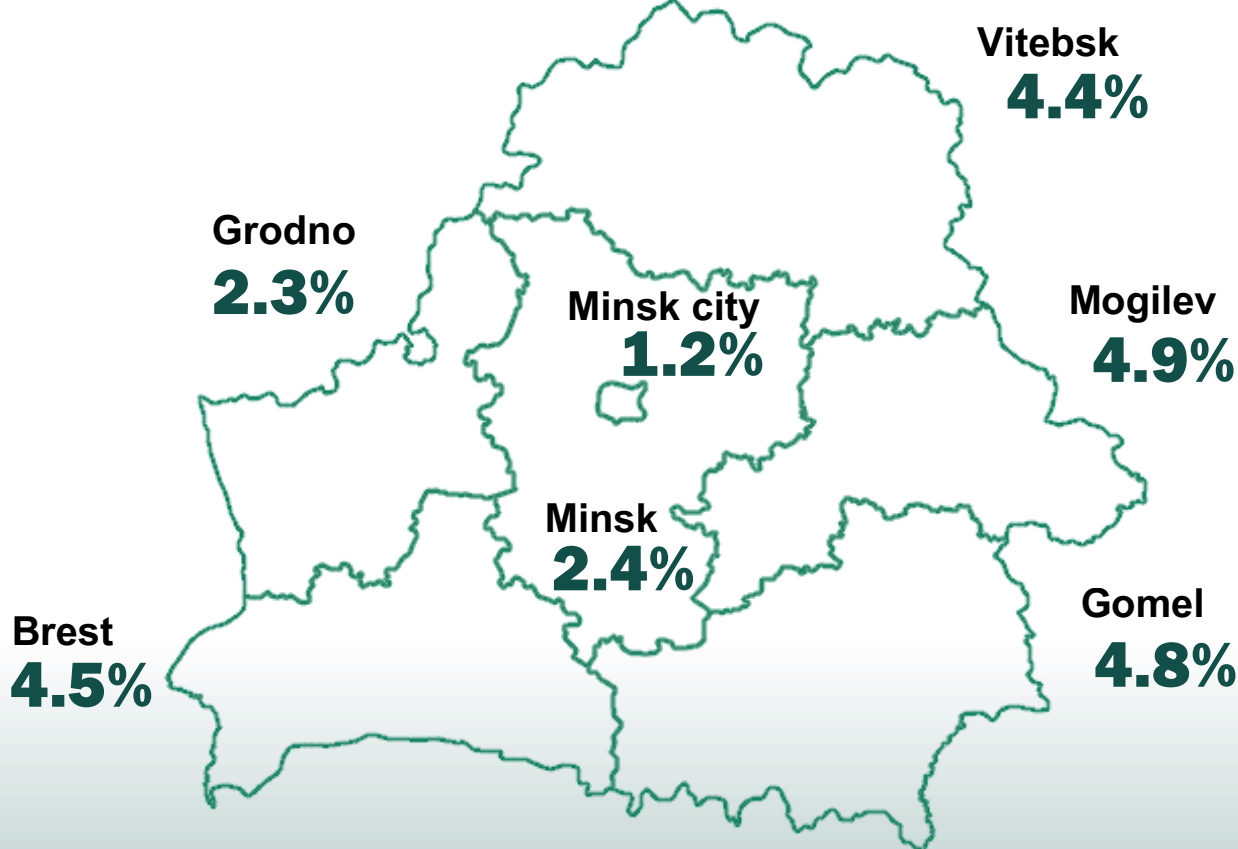
2.6%



5.6%

BY REGIONS AND MINSK CITY

(percent)



*Minimum subsistence budget – the value of the minimum set of food products, non-food goods and services plus compulsory payments and contributions (on average per capita).

MAIN GROUPS OF CONSUMPTION EXPENDITURE

(% of total consumption expenditure)

Food



38.4%

Services



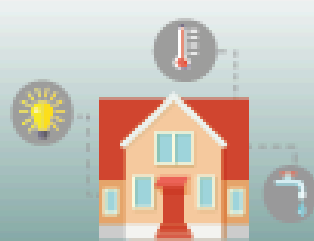
24.4%

Non-food goods



34.9%

of which housing and utilities



6.9%

Current information is located:



Presented for information purposes.
When using the information the reference to the National Statistical Committee of the Republic of Belarus is mandatory.

National Statistical Committee of the Republic of Belarus 220070,

Minsk, Partizansky avenue, 12

hhs@belstat.gov.by

+375 017 378 12 79