

# Total primary energy supply in Belarus in 2020

37

millions tonnes of coal equivalent



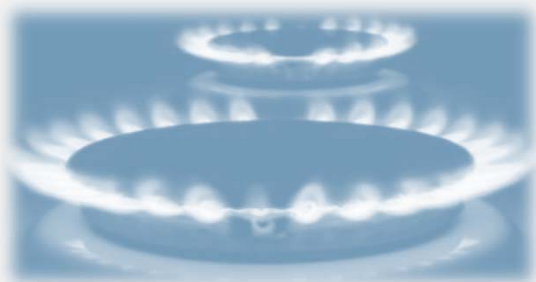
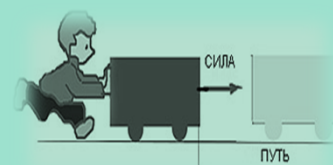
27

millions tonnes of oil equivalent



1,1

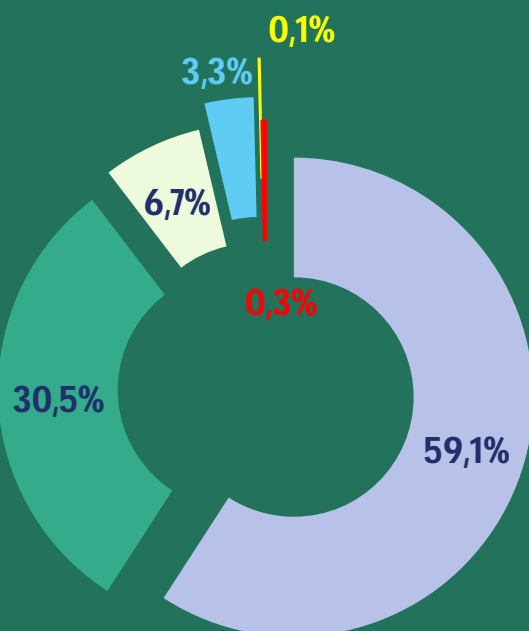
Exa-joules (10<sup>18</sup> joules)



Natural gas is the main source of energy

59%

## Total primary energy supply by fuel, 2020

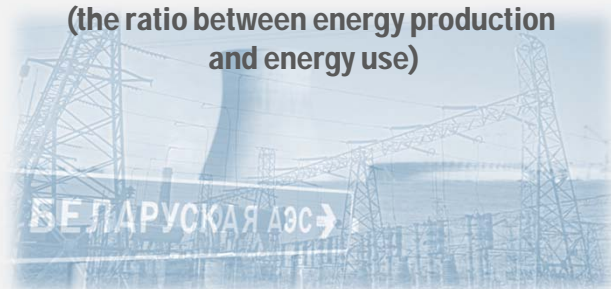


- Natural gas
- Oil
- Biofuels and waste
- Coal and peat
- Electricity
- Nuclear

# Belarus is one of the most energy dependent countries in the world

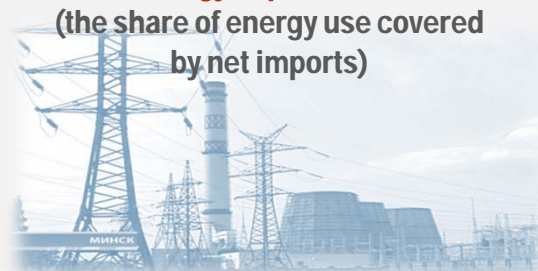
**17,1%**

**Energy self-sufficiency**  
(the ratio between energy production and energy use)



**83,8%**

**Energy dependence**  
(the share of energy use covered by net imports)



**Highest self-sufficiency**

**113%**

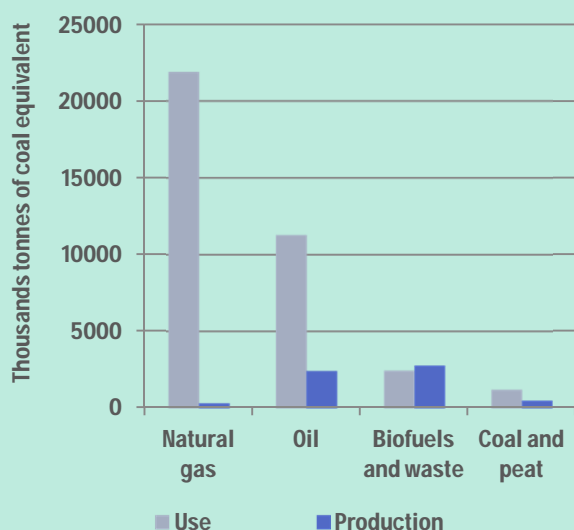
**Biofuels and waste**

**Lowest self-sufficiency**

**2%**

**Natural gas**

**Production and use of energy in Belarus in 2020**

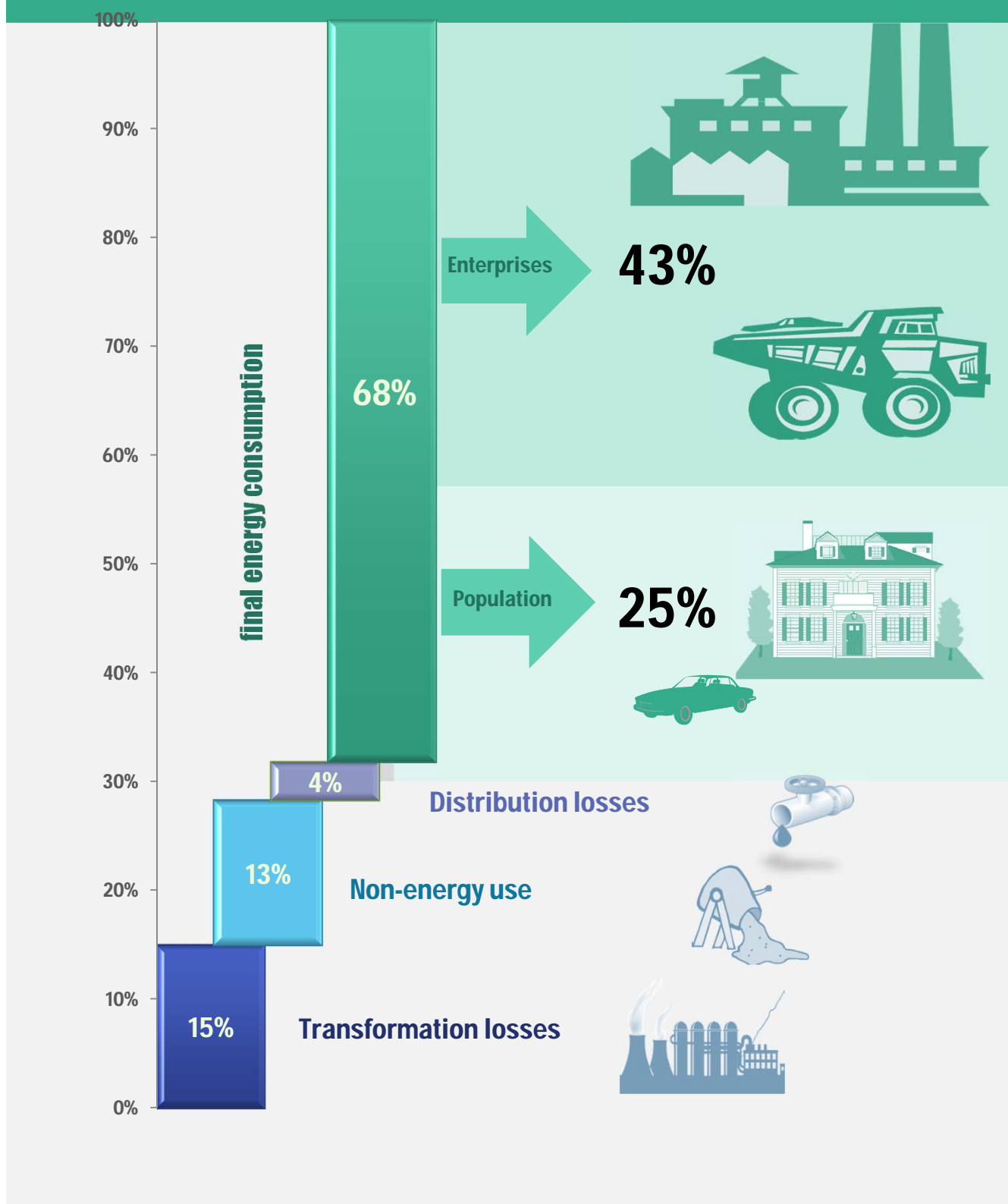


**Primary energy production from renewable in total primary energy supply**

**7,8%**



# Structure of energy consumption in 2020



# Transformation of fossil fuels into electricity and heat



losses



Fuel consumption for electricity and heat production

18

Mtce\*

5

Mtce\*

13

Mtce\*

Production of:



Electricity

37

TWh

5

Mtce\*



heat

58

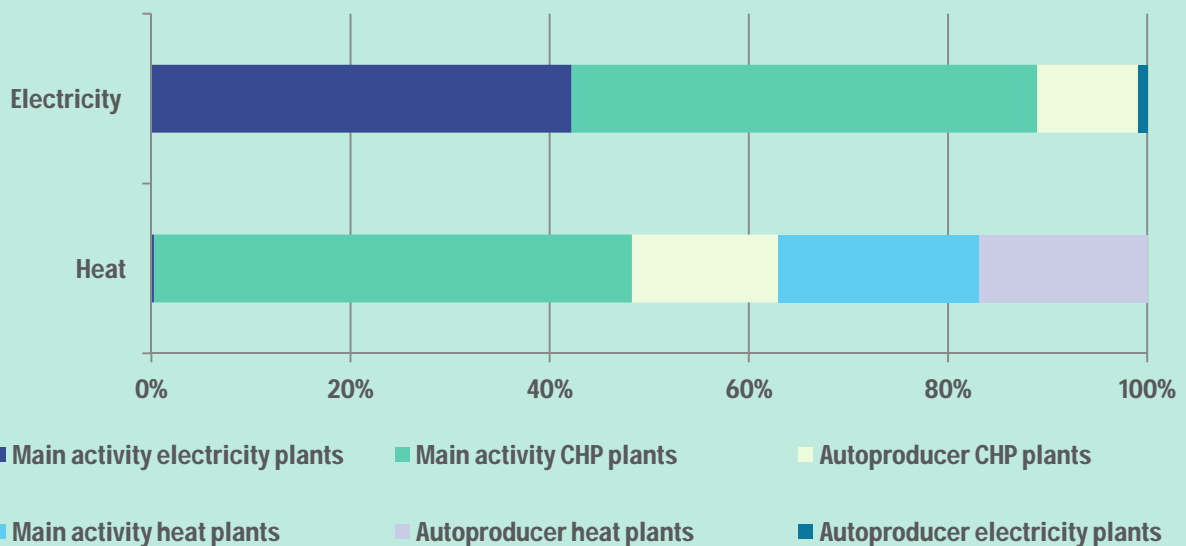
Pcal

8

Mtce\*

production of electricity and heat

## Production of electricity and heat by types of plants in 2020



\*Mtce = millions tonnes of coal equivalent



## Total final energy consumption by sector in 2020

