

Total primary energy supply in Belarus in 2018

38

millions tonnes of
coal equivalent



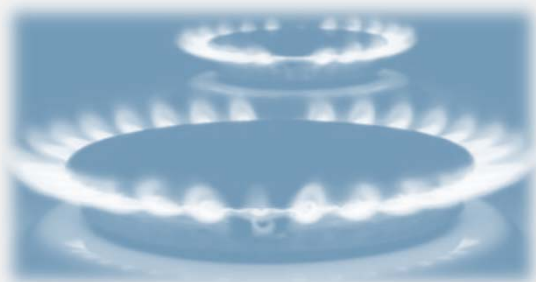
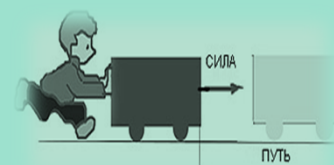
27

millions tonnes of
oil equivalent



1,1

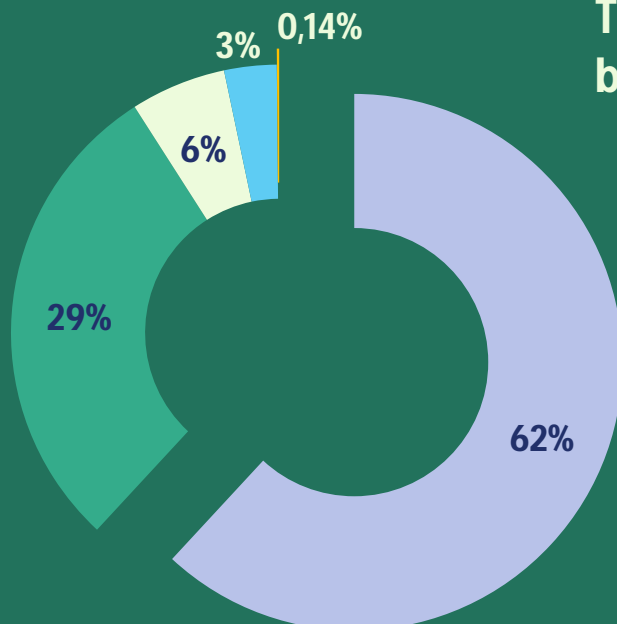
Exa-joules
(10^{18} joules)



Natural gas
is the main source
of energy

62%

Total primary energy supply by fuel, 2018

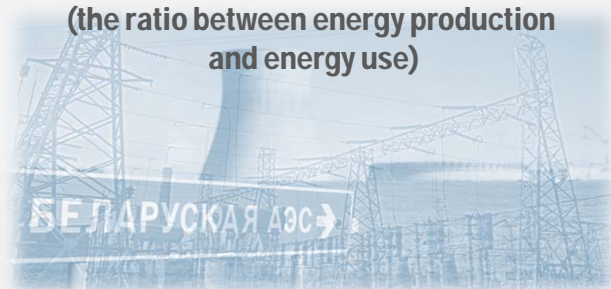


- Natural gas
- Oil
- Biofuels and waste
- Coal and peat
- Electricity

Belarus is one of the most energy dependent countries in the world

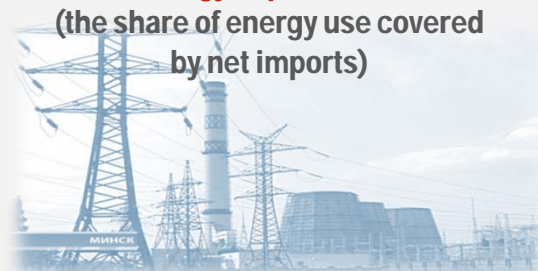
16%

Energy self-sufficiency
(the ratio between energy production and energy use)



86%

Energy dependence
(the share of energy use covered by net imports)



Highest self-sufficiency

107%

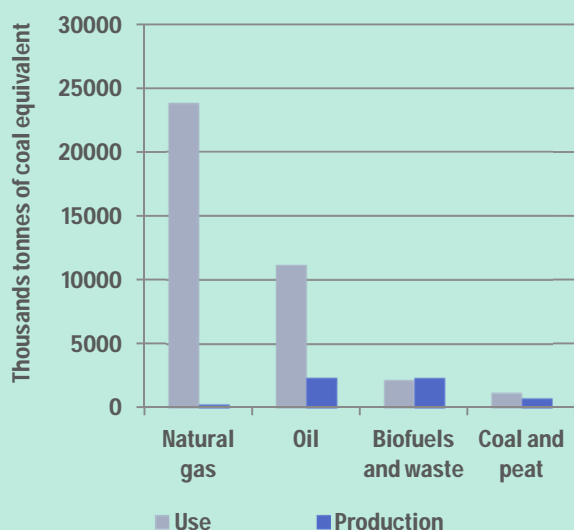
Biofuels and waste

Lowest self-sufficiency

1%

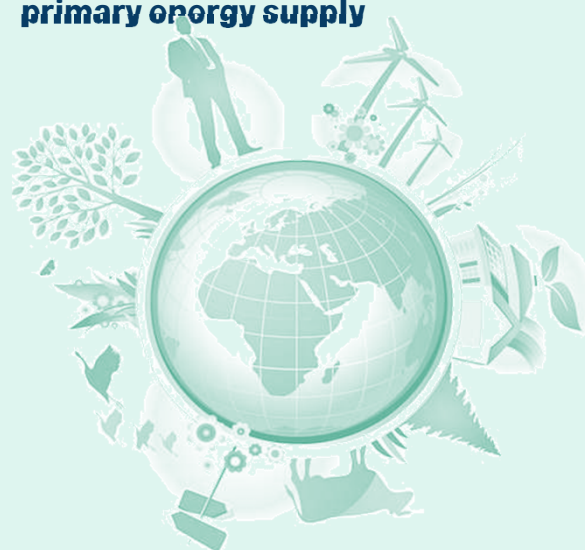
Natural gas

Production and use of energy in Belarus in 2017

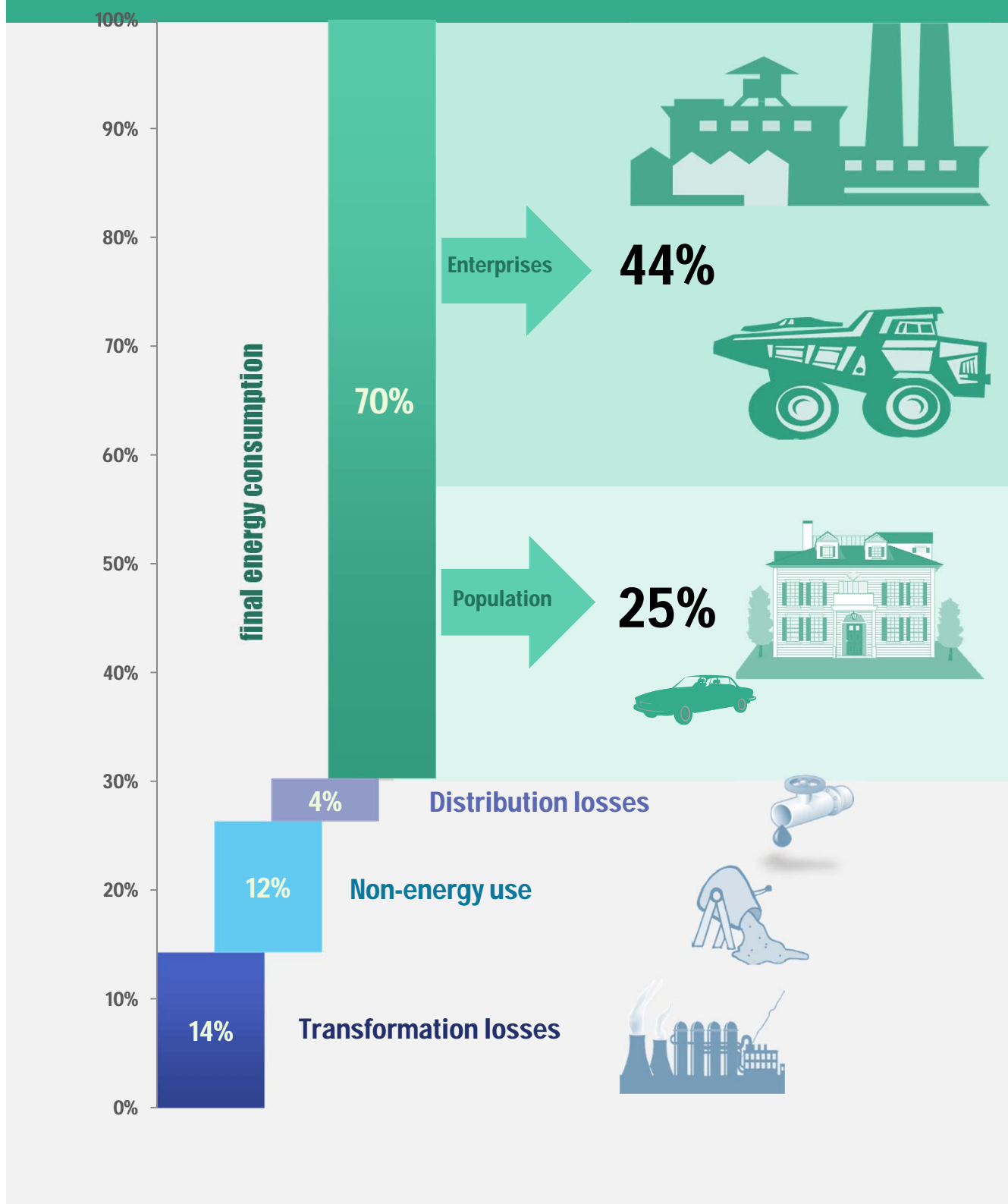


Primary energy production from renewable in total primary energy supply

6%



Structure of energy consumption in 2018



Transformation of fossil fuels into electricity and heat



losses



Fuel consumption for electricity and heat production

19

Mtce*

5

Mtce*

14

Mtce*

Production of:



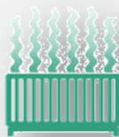
Electricity

38

TWh

5

Mtce*



heat

62

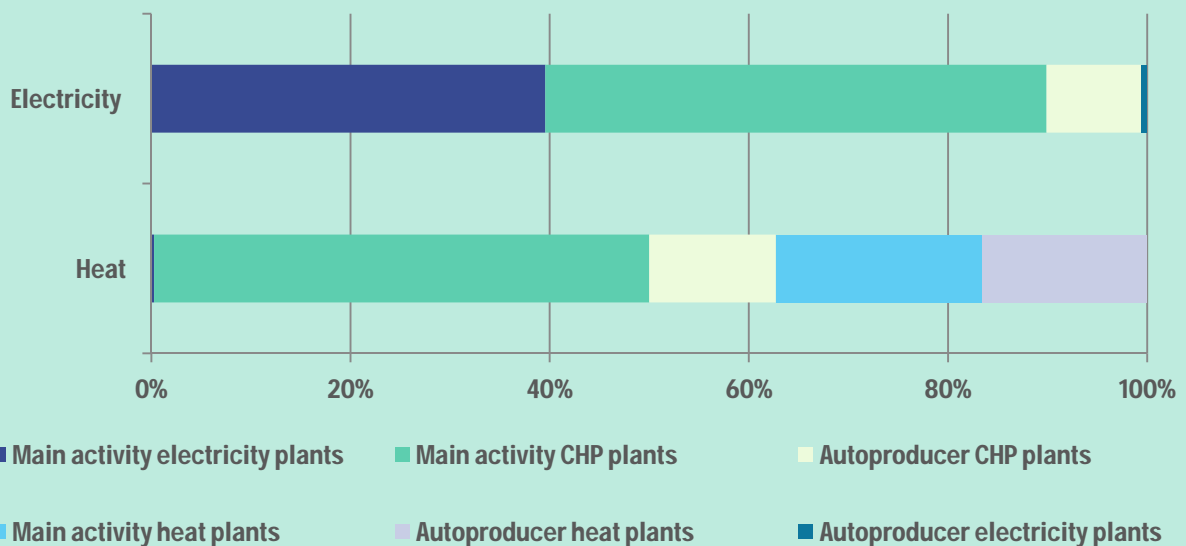
Pcal

9

Mtce*

production of electricity and heat

Production of electricity and heat by types of plants in 2018



*Mtce = millions tonnes of coal equivalent



Total final energy consumption by sector in 2018

